

Introducing

JESSUP Safety Track® 3307

Virtually Invisible Anti-Slip Tape

The Jessup Safety Track® 3307 offers the ultimate in ultra-clear safety when it comes to anti-slip applications. This high-performance product offers a 60 grit non-slip surface, meeting OSHA and ADA standards for general purpose use. With an impressive level of durability and UV protection of up to 12 months, the Safety Track® 3307 can be used both indoors and outdoors, making it ideal for boating, motor cross, surfboards and other activities. It also offers superior comfort with its barefoot friendly surface.



Holds up under heavy foot traffic

Foot friendly surface rated **R11** for high traction slip resistance



Won't fade outside-UV Resistant



Non PVC for a earth friendly solution

Typical "Clear" Anti-Slip

JESSUP Safety Track® 3307



Super clear polyester film



Holds up under wet conditions



Easy to clean with mops and floor scrubbers

JESSUP
Adhesive Coated Films

jessupmfg.com

JESSUP SafetyTrack® 3307

Virtually Invisible Anti-Slip Tape

Recommended for use on:

- Swimming pools and decks
- Stairs and ramps
- Patios and balconies
- Fitness and yoga studios
- Surfboards, kayaks
- Boats and marine applications
- Playgrounds and recreational areas
- Anywhere barefoot traffic is common
- Anywhere slip resistance is needed while maintaining a clear and clean appearance

Applies to:

Concrete, wood, tile, marble, fiberglass, sealed concrete

Available in:

60' rolls: 1", 2", 3", 4",
6", 12", 18", 36" or 48"

Treads: 6"x24" /50 per pack

Duration:

12+ months depending
upon use, environment,
and application

Certifications:

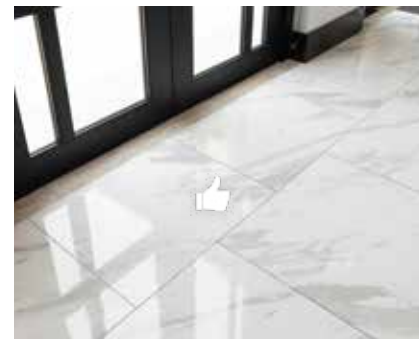
- R11 DIN EN 16165:2023-02
- B101.3

Order your sample today.

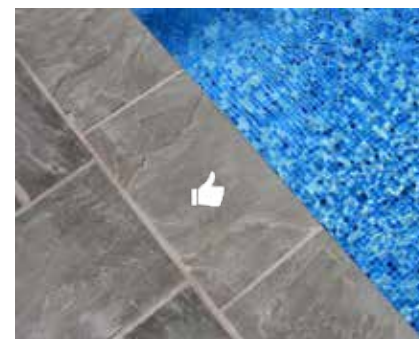
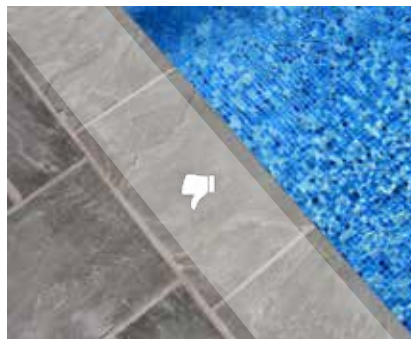
Part : 3307-4x4



Now you see it!
Typical "clear" anti-slip



Now you don't!
JESSUP SafetyTrack® 3307



PHYSICAL PROPERTIES	TEST METHODS	AVERAGE RESULTS
Thickness	PSTC - 133 - Substrate - Pressure Sensitive adhesive - Release Liner	0.014 inch (0.330 mm) 0.001 inch (0.031 mm) 0.0065 inch (0.165 mm)
Peel Adhesion to:	PSTC – 101	
- Stainless Steel	15 minute dwell 24 hour dwell	60 oz/in (66 N/100 mm) 75 oz/in (83 N/100 mm)
- Powder coated surfaces *	15 minute dwell 24 hour dwell	55 oz/in (27 N/100 mm) 70 oz/in (27 N/100mm)
- Polyethylene	15 minute dwell 24 hour dwell	25 oz/in (61 N/100 mm) 25 oz/in (77 N/100 mm)
Shear Adhesion to:	PSTC – 107	
- Stainless Steel	1/2" x 1/2" x 1000g	5 hours
Tack	PSTC - 6 Rolling Ball Tack	< 5 inches



**Color and lot variances of coated surfaces including paints, powder coatings, lacquers, stains, and other treatments may vary the performance of the tape and should be evaluated for the compatibility of the tape to the specific surface.*



Scan to see video

Order now: 1-888-711-7735.

Jessup Manufacturing Company

©2024 Jessup • MKT-JMC-3307



jessupmfg.com