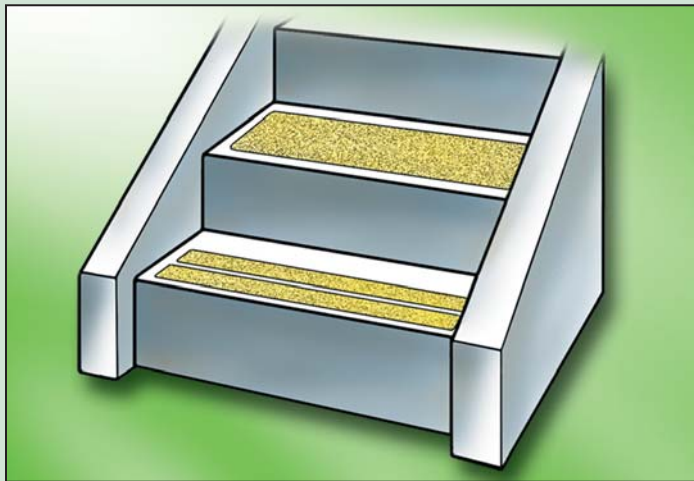


GLO BRITE® SAFETY TRACK® 3400 SERIES

In an emergency situation, there is always the possibility of panic and the risk of serious injury due to slips and falls. Glo Brite® / Safety Track® is non-skid, mineral-coated photoluminescent tape that provides unsurpassed, non-slip protection on hazardous surfaces. Because Glo Brite® / Safety Track® absorbs and stores energy from ambient light, it is instantly visible in event of darkness. Glo Brite® / Safety Track® easily adheres to most surfaces, making it ideal for stairs and other potentially slick surfaces that are part of your low-level emergency egress system.



© Jessup 2006

GLO BRITE® STRIPE TAPE

Glo Brite® Stripe Tape is a flexible laminated, printed film that is perfect for marking pathway obstructions that may be hazardous in blackout and very smoky conditions. This tape absorbs and stores energy from ambient light, and is immediately visible in sudden darkness. Glo Brite® Stripe Tape easily affixes to most wood, metal, concrete, plaster and painted surfaces. Incomparably reliable, Glo Brite® Stripe Tape is perfect for your low-level emergency egress system.



© Jessup 2006

PRODUCT

NUMBERS

Glo Brite®
Safety Track®
3420 Series
3450 Series



- 3420/3450 – 2" x 60' Roll (6 rolls/case)
- 3420/3450 – 3" x 60' Roll (4 rolls/case)
- 3420/3450 – 4" x 60' Roll (3 rolls/case)
- 3420/3450 – 6" x 60' Roll (2 rolls/case)
- 3420/3450 – 12" x 60' Roll (1 roll/case)
- 3420/3450 – 18" x 60' Roll (1 roll/case)
- 3420/3450 – 24" x 60' Roll (1 roll/case)
- 3420/3450 – 6" x 24" (50 pcs/case)
- 3420/3450 – 6" x 24"-10 (10 pcs/case)
- 3420/3450 – 3 – ARW – 20 (20 pcs/pack – 10 packs/case)
- 3420 – 3 – CIR – 20 (20 pcs/pack – 10 packs/case)

PRODUCT

NUMBERS

Glo Brite®
7520 Series

Glo Brite®
7530 Series

Glo Brite®
7550 Series

- 7520 – 2 – STRIPE – R
- 7520 – 2 – STRIPE – G
- 7520 – 2 – STRIPE – B
- 7530 – 2 – STRIPE – B
- 7530 – 2 – STRIPE – G
- 7530 – 2 – STRIPE – R
- 7550 – 2 – STRIPE – R
- 7550 – 2 – STRIPE – G
- 7550 – 2 – STRIPE – B

TECHNICAL DATA

Construction:	Abrasive grain-coated plastic film, with one side pressure-sensitive adhesive and protected by removable liner
Thickness:	.035 +/- 4%
Color:	White/Green (normal light conditions)
Illumination:	High Visibility Yellow/Green
Durability:	Long life, durable and resistant to traffic, water and grease
Standards:	Exceeds OSHA Standards for non-slip protection on hazardous surfaces; Motor Vehicle Safety Standard No. 302; MIL-D-17951C (Ships), and ASTM E 2030-02, ASTM E 2072-00, ASTM E 2073-02
Installation:	Position, peel-off backing and apply to dry, non-oily surface Minimum application temperature 50° F
Surface Compatibility:	Painted wood, painted metal, sealed concrete and most nonporous surfaces
Storage Life:	One year @ 72° F/50% relative humidity
Availability:	Roll lengths: 60 feet; Roll widths: 2", 3", 4", 6", 12", 18", 24" Die cuts: 6" x 24"; 3" arrows; 3" circles Custom die cuts and other sizes available upon request

TECHNICAL DATA

Construction:	Flexible laminated, printed film, coated with permanent acrylic pressure-sensitive adhesive and backed by poly-coated release liner
Thickness:	.012 +/- 10% (film/adhesive)
Color:	White/Green with Red, Green or Black striping (normal light conditions)
Illumination:	High Visibility Yellow/Green
UV Stability:	Excellent
Installation:	Position, peel-off backing and apply to dry, non-oily surface Minimum application temperature 50° F
Availability:	2" x 30-ft. rolls (3 rolls/case) Custom sizes available upon request Red, Green or Black striping